

# CIJ Printer PXR Series

The marathon class of Ink Jet Printer

**HITACHI**  
Inspire the Next



Superiority through technology.  
World beating efficiency and reliability.

**IJP** 7X10  
3 LINES  
BBE 04-05

abcdefghijkl  
1234567890  
ABCDEFGHIJ  
4 LINE 5X7

250V~10-16A



# CIJ Printer

# PXR Series

The marathon class of Ink Jet Printer

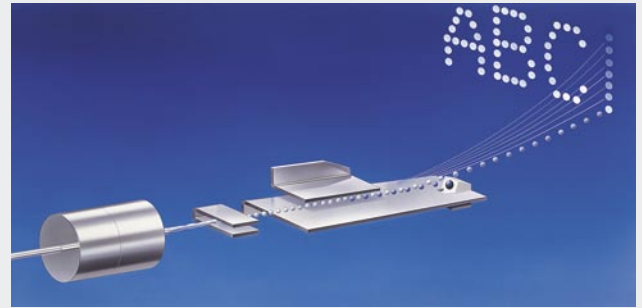
## Hitachi Ink Jet Printers

For more than 30 years Hitachi has developed and produced ink jet printers based on the Continuous Ink Jet (CIJ) principle for industrial marking.

The use of the company's own components ensures not only the extremely high quality level, it also explains the excellent value for the money. Hitachi ink jet printers have been developed with international standards, such as the CE standard, firmly in mind.

The use of trend-setting technologies like touch panels for data input and unit control, automatic print head cleaning and a virtually emission-free ink circulation system guarantees top performance, automatic adaptation to environmental conditions and very low consumption values.

Well-known companies with an international presence, like Coca-Cola, Procter & Gamble, Nestlé, Sony, Arla Foods and Krones use Hitachi ink jet printers for a broad range of marking applications.



## Product Development

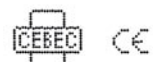
<b>1975</b>	Model DP	First Japanese continuous ink jet printer for Coca Cola
<b>1977</b>	Model P	Microprocessor-based model
<b>1981</b>	Model S	Standard model/60µm jet
<b>1985</b>	Model F	For multi-function applications
<b>1987</b>	Model FX	16-bit microprocessor
<b>1990</b>	GX Series	Automatic print head cleaning
<b>1994</b>	HX Series	Lower consumption/export model
<b>1998</b>	KX Series	Simple operation with 10.4" touch panel
<b>2003</b>	PX Series	IP 55/CE/reduced consumption
<b>2004</b>	PB Series	For standard application, 2 line printing
<b>2005</b>	PX-P Series	For pigment-based inks
<b>2006</b>	PXR Series	PXR-D (standard, small & large size), PXR-P for pigmented ink, PXR-H for high speed printing



**IJP** 7X10  
3 LINES  
BBE 04-05

abcdefghijkl  
1234567890  
ABCDEFGHIJ  
4 LINE 5X7

250V~10-16A



## Hitachi Ink Jet Printers PXR Series

### PXR Series

- User friendly and easy to operate through TFT touch panel display with full guidance on the screen
- TFT Display ensure a high contrast and wide view angled and good visibility in all light intensive conditions ( sunlight)
- Economical ink system which minimizes the running costs through low make-up consumption and no daily cleanings
- Highest reliability through advanced quality control system and long life pump unit
- Ecological ink system with minimized vapour exposure
- RoHS compliant
- Wide range of adjustment possibilities to ensure high printing quality for all applications
- Well designed accessibility to the ink system for easy and quick maintenance
- All maintenance routines are step by step screen guided

- Error log function to find errors quicker
- Automatic cleaning function for reliable start/stop performance



### PXR-D260/460W

#### The printer for every marathon

- wide range of printhead/object distance to mark various product shapes without mechanical adjustments

### PXR-D240/440W

#### The printer for the fine marathon

- micro fine character printing
- high printing quality by higher resolution
- advanced drop control system to ensure stable printing quality in all environmental conditions

### PXR-P460W

#### The printer that runs the marathon in the dark

- for pigmented inks
- long life pump driven ink system
- new designed ink circulation system with same maintenance as non-pigmented ink circulation systems
- the mechanical stirring stem maintains stable pigment dispersal

### PXR-D410W

#### When size matters in the marathon

- for construction material and heavy industry
- where DOD systems are not suitable to handle the application
- wide range of printhead/object distance to mark various product shapes
- improved visibility for outer case coding and high porous material

### PXR-H450W

#### The printer with the reserves from start to finish

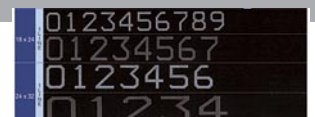
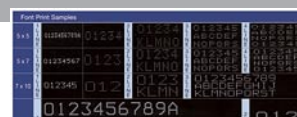
- for high speed and high print quality applications
- advanced viscosity control to achieve highest printing quality in all environmental conditions
- higher printing flexibility without decreasing production capacity
- reduced printing costs by minimized ink and makeup consumption



12345  
ABCDEF  
HITACHI

abcde  
123456  
IJP

01234ABCDE  
01234ABCDE  
01234ABCDE



# CIJ Printer PXR Series

The marathon class of Ink Jet Printer

**HITACHI**  
Inspire the Next

## All features at a glance

Character size	Standard Size		Small Size		Large Size	Pigmented	High Speed
Nozzle size (µm)	65 µm		40 µm		100 µm	65 µm	55 µm
Model	PXR-D260W	PXR-D460W	PXR-D240W	PXR-D440W	PXR-D410W	PXR-P460W	PXR-H450W
Max. print line number	Up to 2 Lines	Up to 4 Lines	Up to 2 Lines	Up to 4 Lines	Up to 4 Lines	Up to 4 Lines	Up to 4 Lines
Maximum number of print Characters (Characters/Line)	1 Line: Up to 240 2 Lines: Up to 120	1 Line: Up to 240 2 Lines: Up to 120 3 Lines: Up to 80 4 Lines: Up to 60	1 Line: Up to 240 2 Lines: Up to 120	1 Line: Up to 240 2 Lines: Up to 120 3 Lines: Up to 80 4 Lines: Up to 60	1 Line: Up to 240 2 Lines: Up to 120 3 Lines: Up to 80 4 Lines: Up to 60	1 Line: Up to 240 2 Lines: Up to 120 3 Lines: Up to 80 4 Lines: Up to 60	1 Line: Up to 240 2 Lines: Up to 120 3 Lines: Up to 80 4 Lines: Up to 60
Dot Matrix Sizes (horizontal x vertical)	5 x 5, 5 x 8 (or 5 x 7), 7x10 (or 9 x 8, 9 x 7), 12 x 16	5 x 5, 5 x 8 (or 5 x 7), 7x10 (or 9 x 8, 9 x 7), 12 x 16, 18 x 24, 24 x 32	5 x 5, 5 x 8 (or 5 x 7), 7x10 (or 9 x 8, 9 x 7), 12 x 16	5 x 5, 5 x 8 (or 5 x 7), 7x10 (or 9 x 8, 9 x 7), 12 x 16	5 x 5, 5 x 8 (or 5 x 7), 7x10 (or 9 x 8, 9 x 7), 12 x 16, 18 x 24, 24 x 32	5 x 5, 5 x 8 (or 5 x 7), 7 x 10 (or 9 x 7, 9 x 8), 12 x 16	5 x 5, 5 x 8 (or 5 x 7), 7 x 10 (or 9 x 7, 9 x 8), 12 x 16
Total Print Height	2-10 mm		1-5 mm		3-15 mm	2-10 mm	appr. 2-6.5 mm
Display & input device	Display: TFT Liquid crystal (10.4 inch, color), backlight provided. Input Device: Touch panel, input sound provided. Display Language: English, German, French, Italian, Spanish, Portuguese, Dutch, Swedish, Arabic, Greek, Russian, Czech, Polish, Danish.						
Maximum Print Rate	Up to 2,296 character/s		Up to 1,514 character/s		Up to 468 character/s	Up to 2,083 character/s	Up to 3,173 character/s
Standard Characters	Alphanumeric (A-Z, a-z, 0-9), general symbols (27), Space: total 90						
Number of Logos	up to 128 Logos/Font						
Print functions	Calendar, Basic counting, Data storage (150 Messages), Dot matrix mixture, Password, Bar codes (code 39, ITF, NW-7, EAN13/UPC-A), Code 128/EAN128, Speed follow-up, Reciprocation printing, etc						
Additional print functions	Data matrix 2D-code	Data matrix 2D-code	Data matrix 2D-code	Data matrix 2D-code	Data matrix 2D-code	Data matrix 2D-code	-
Input signals	Print object detection, Printing stop, Reciprocation printing, Rotary encoder pulse, Run, Stop, Reset Abnormality						
Output signals	Ready to print, Abnormality, Alarm, Print in progress or print completed, Communication online.						
Data interface	RS-232C (Ethernet, Profibus Connection available by Enhancement Module)						

## General specifications:

Print head cable length	4 m
Power supply (Automatic voltage selection)	AC 100-120 / 220-240 V ±10% 50/60 Hz 150 VA
Cabinet	Stainless Steel / IP55
Approval	CE, UL, cUL,C-Tick

Operating temperature range:	0-45 °C (JP-K69 Ink) Pigmented: 0-40 °C (JP-W73 Ink) High Speed: 0-40 °C (JP-K69, JP-K72 Ink)
Humidity Range	30-90 % R.H. (no condensation)*
Overall size (W x D x H)	400 x 290 x 515 mm
Approximate weight	25 kg

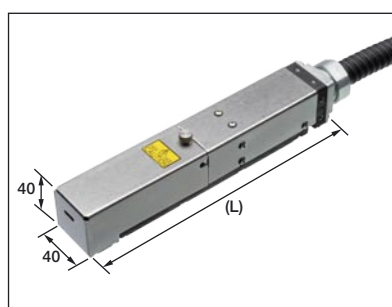
\* Note: When humidity is more than 85 % RH, please purge inside of print head by air.

## PXR Series Dimensions of Control Unit and Printhead

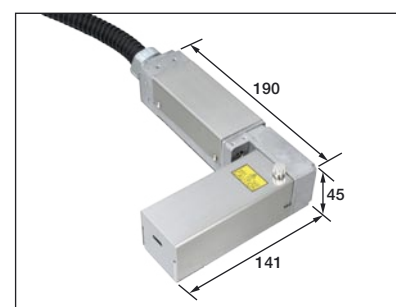
Nozzle size	Straight Printhead Length (L)	Angled Printhead Dimension (L x D x H)
40 µm	215 mm	
55 µm	230 mm	
65 µm	230 mm	190 x 141 x 45 mm
100 µm	235 mm	



Control Unit



Printhead



Angled Printhead

Hitachi Europe GmbH  
Am Seestern 18 · D-40547 Düsseldorf  
Tel. +49-211-52 83 -0 · Fax +49-211-52 83 -649  
www.hitachi-ds.com  
E-Mail: info@hitachi-ds.com